



**KENYA FORESTRY RESEARCH INSTITUTE  
KITUI REGIONAL RESEARCH**

**Report on: The South Eastern show (ASK) - Machakos and  
Participation at the Kitui Agricultural Training Centre Farmers Open day  
2007/2008**



**Akula Mwamburi, Damaris Munyao and Samwel Auka**

### **South Eastern (ASK)- Machakos**

The Centre participated in the South Eastern Show which was held at Machakos show ground. The theme of the ASK- South Eastern Kenya was “Empowering the people through Agri-business” which was held on 5<sup>th</sup> - 7th July 2007. The stand was shared with other MENR institutions.

Kitui Regional Research Centre was allocated a space for displaying our products and the following was exhibited:

1. Melia Products ( Mukau) – stools made from Melia timber, pieces of timber, seeds and seedlings of Mukau were displayed
2. Bamboo products- stools, chairs, and pen holders were also displayed
3. Display of non-woody products  
Jam, juice and wine from Tamarindus indica and baombab were displayed.
4. Fancy products from Karura station – stoo, fruit bowl, sugar dishes
5. Aloe product – lotions, soaps, shampoos and conditioners were displayed
6. KEFRI publications – reports booklets and brochures were displayed and distributed
7. KEFRI publications were also displayed and distributed to the attendants.

## **Achievement**

KEFRI, KFS and NEMA shared the ministry's exhibitions stand, which was enlisted under three-judgment category

- Theme interpretation
- General medium trade stand
- Government medium stand

The stand managed to attain second position each in the last two categories and we were issued with a certificate. Preparation for the event was hampered by the limited availability of resources, both logistic and financial due to scheduling in relation to fiscal year planning.

## **Issues raised included**

- Propagation of Mukau and how to acquire the seeds
- Propagation and source of Eucalyptus seeds
- Establishment of wood lots (Eucalyptus and Mukau)
- Establishment of commercial Eucalyptus plantation)

More than 200 people visited our stand though 21 signed our visitor's book.

KEFRI's interest would be best presented with its own distinct exhibition stand.

## Participation at the Kitui Agricultural Training Centre farmers open day

The Centre received an invitation to participate in the farmer's field day which was organized by the Agricultural department at the Kitui Agricultural Training Centre. The event was successful and well attended. More than 200 people visited our stand though 180 signed our visitors' book. We were given a certificate of attendance .

Among the senior dignitaries who visited our stand was the DC – Kitui District and the D/PDA – Eastern Province who were so much impressed and commented it as wonderful display.

The following were our displays

1. Introduction about KEFRI

A brief introduction of KEFRI and KRRC was done to all the participants who visited our stand, and KEFRI Mission, Vision and Objective were also explained.

2. Melia production Process

The production process was explained and shown e.g. Fruits which are unripe, ripe and even rotten ones. Seeds from the same were also shown and the nut cracking process. Seed germination in germination trays covered with plastics and the seedlings

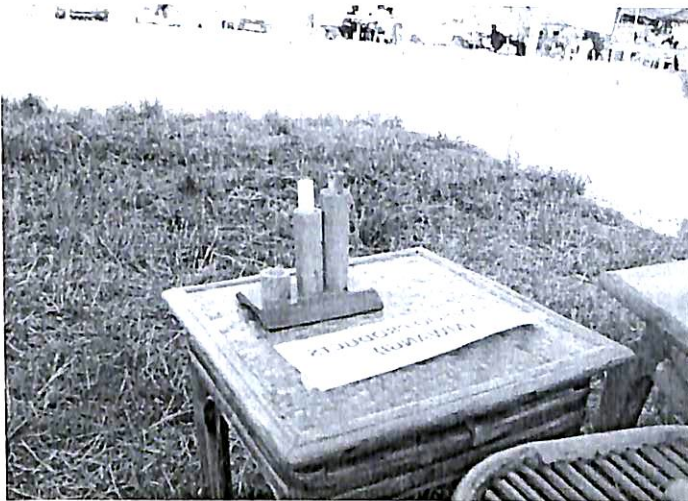
3. Dryland tree Spp and their products

- Melia seedlings –products from melia like stools and pieces of timber wood were displayed
- Combretum spp.
- *Adansonia digitata* seedlings
- *Scherocarya birrea* seedlings
- Comiphora spp seedlings – coffee table was displayed
- Bamboo seedlings – chairs made from bamboo were displayed
- *Tamarindus indica* seedlings

4. Display of non-woody products  
Jam, juice and wine from *Tamarindus indica* and baombab were displayed.
5. Comiphora products- In Ukambani Comiphora is regarded as tree of no value and to prove that it can produce products of high quality the following was also displayed, hives, carvings and a coffee table .
6. Assorted fancy products – these are the products made from waste timber from Karura station – three legged stool, walking stick, trays, fruit bowls and sugar dishes. People were interested with them so much.
7. Aloe product – lotions, soaps, shampoos and conditioners were displayed
8. KEFRI publications – reports, booklets and brochures were displayed and distributed

Plates of the displays exhibited





## Issues raised

1. Participants had interest on the following areas and wanted to have more information
  - **Non – woody product** – they requested for training on the processing of jam, juice and wine from Tamarindus and baobab since they are locally available.
  - **Melia production process** – they need training since some have been trying to raise Melia seedlings but in vain.
  - **Aloe Spp** - participants wanted to know how one can differentiate the species since there are many types which are growing in Ukambani and the processing of the products. The other issue was whether they can be assisted to get a ready market if they establish plantations.
  - **Support** – the farmers requested how they could link up with KEFRI to access support



